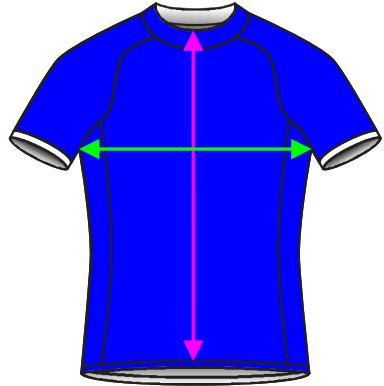
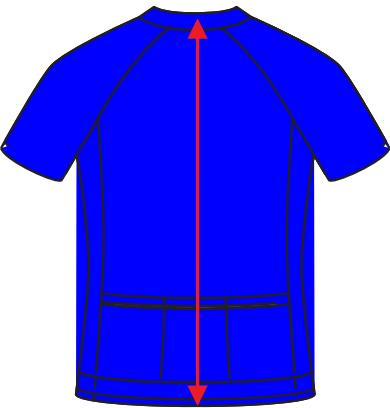







MALE JERSEY

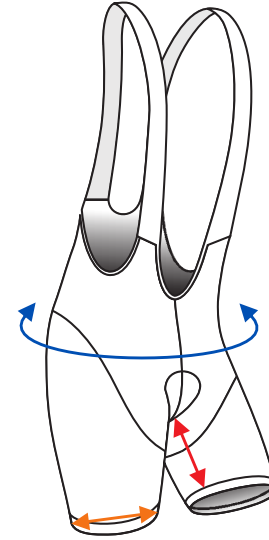


CLUB CUT	FRONT LENGTH	BACK LENGTH	ARMPIT TO ARMPIT
XXS	58	70	44
XS	59	71	47
S	60	72	49
M	61	74	51
L	63	76	52
XL	64	77	54
XXL	65	78	55
XXXL	67	79	58






RACE CUT	FRONT LENGTH	BACK LENGTH	ARMPIT TO ARMPIT
XXS	53	64	42
XS	54	65	44
S	55	68	46
M	56	71	48
L	58	72	50
XL	59	73	52
XXL	61	75	54
XXXL	62	76	56

NOTES	
	Jersey Measurement - top of collar to bottom of jersey
	Jersey Measurement - top of collar to bottom of jersey
	Jersey Measurement - arm pit - arm pit laid flat on table



MALE SHORTS

SHORTS	HIPS	INSEAM	THIGH
XXS	88	21	24
XS	91	21	25
S	94	22	26
M	97	23	27
L	100	24	28
XL	103	25	29
XXL	106	26	30
XXXL	109	27	31

NOTES	
	Body Measurement
	Shorts Measurement - center of chamois to end of leg
	Shorts Measurement - width of shorts leg while flat on a table

FEMALE JERSEY

RACE CUT	FRONT LENGTH	BACK LENGTH	ARMPIT TO ARMPIT
XXS	51	62	42
XS	52	63	44
S	54	65	45
M	55	66	47
L	57	68	49
XL	58	69	51
XXL	60	71	53
XXXL	61	72	55

www.wattcustom.com

info@wattcustom.com

Cycling Clothing Sizing Chart

MEASUREMENTS IN CM